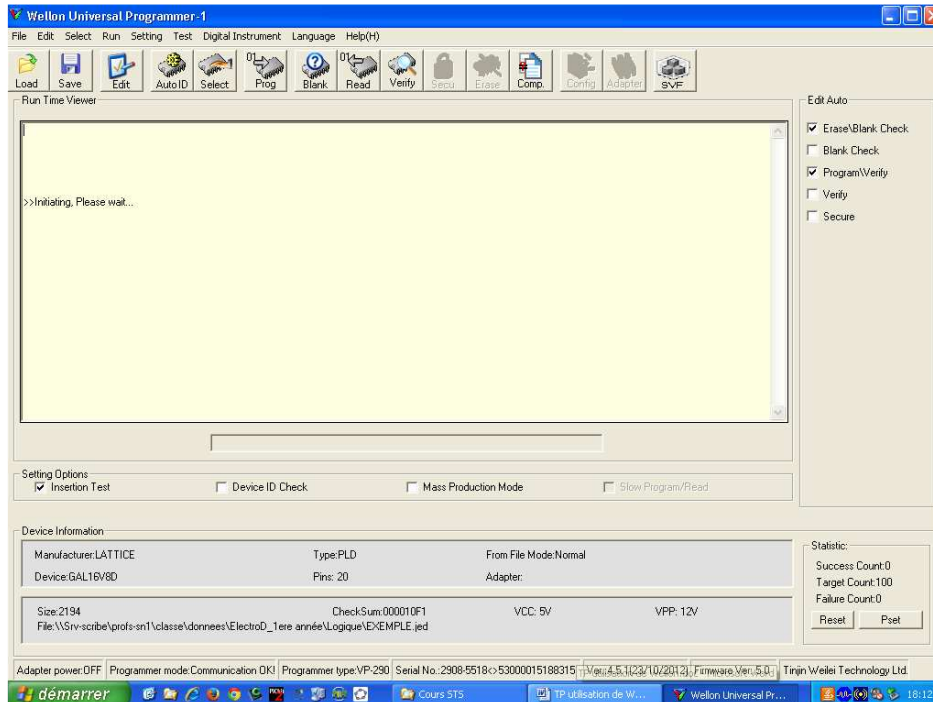
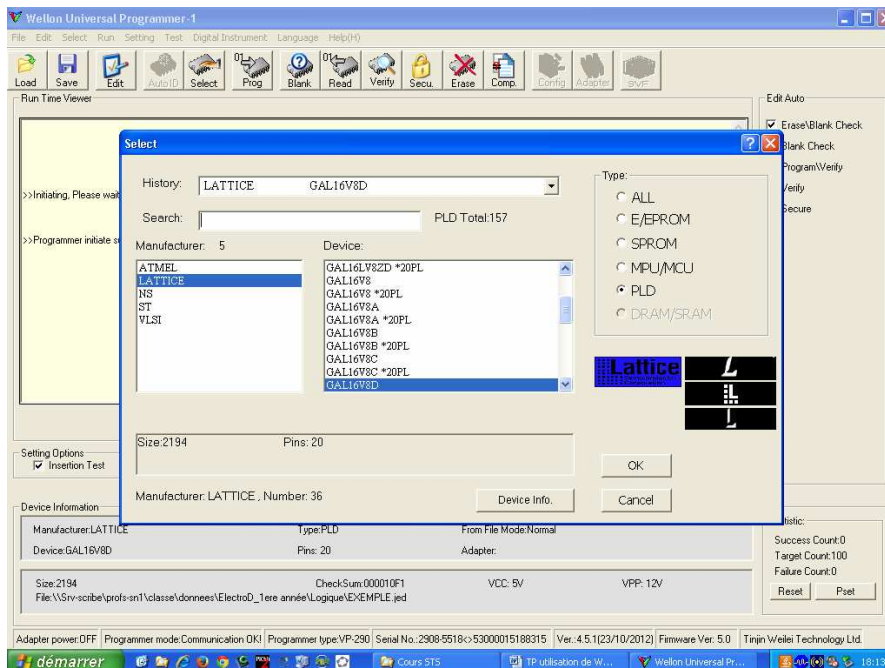


1) Lancement du logiciel Wellon

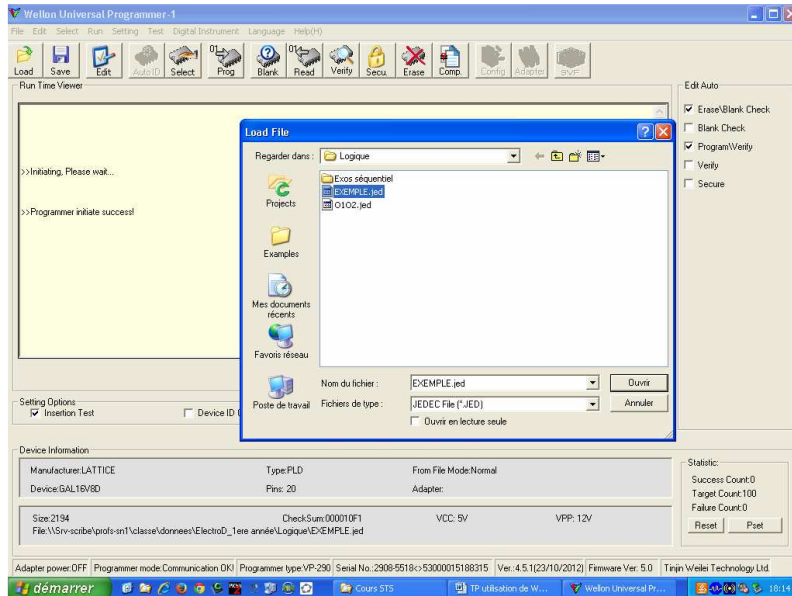


2) Sélection du circuit

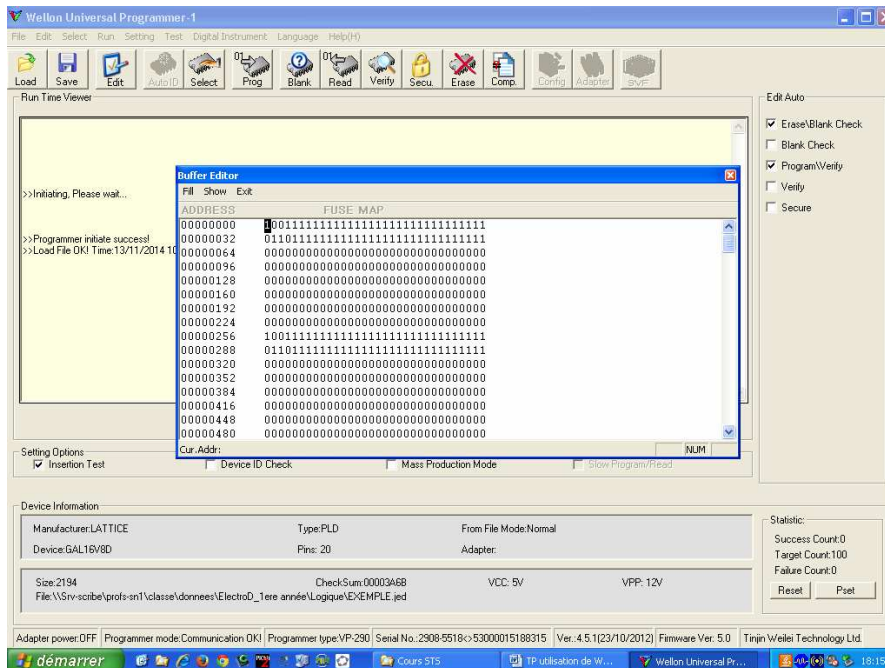
Select / PLD / Lattice / GAL16V8D / OK



3) Chargement du fichier de programmation LOAD / TOTO.JED

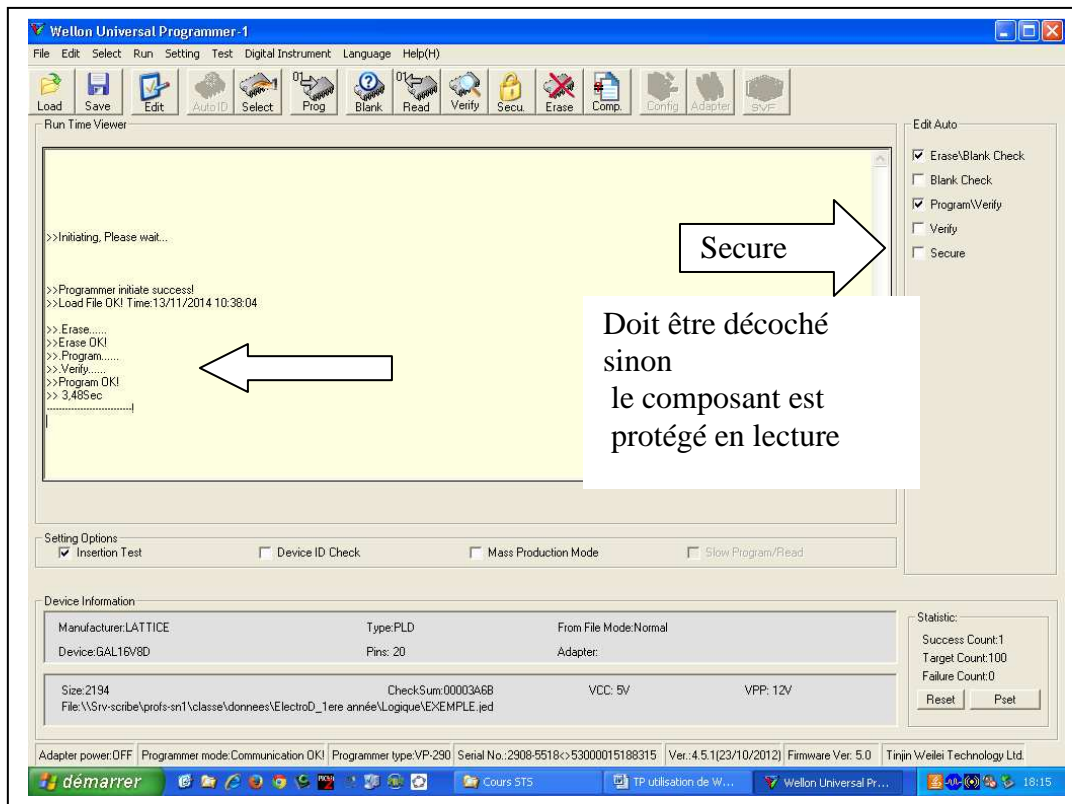


4) Visualisation du fichier chargé EDIT / EDIT BUFFER



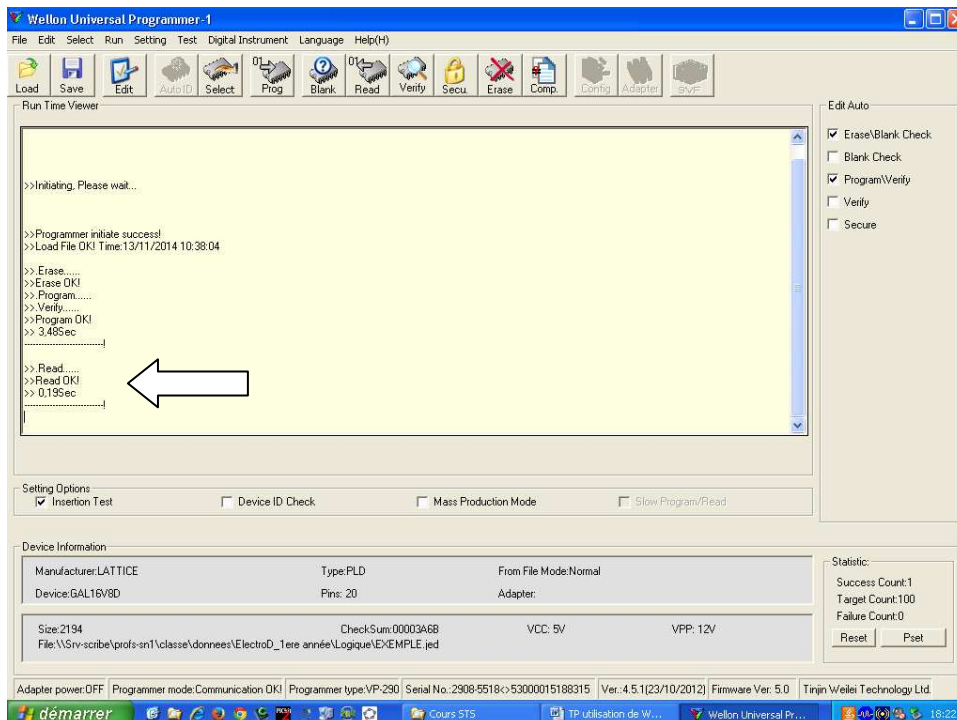
5) Programmation du composant

PROG / CONTINUE



6) Lecture du circuit

READ



7) Visualisation du fichier écrit

EDIT / EDIT BUFFER

